

- IN ORDER THAT YOUR PRODUCT IS NOT OUT OF THE WARRANTY, YOU MUST ASSEMBLE IN ACCORDANCE WITH THE INSTALLATION SCHEME.
- SPREAD ALL THE MATERIALS FROM THE PACKAGE ON A FLAT FLOOR IN ORDER THAT YOU HAVE NO DIFFICULTY IN ASSEMBLY.
- CHECK THE MATERIALS AND THEIR QUANTITIES STATED ON THE INSTALLATION DIAGRAM BEFORE STARTING THE INSTALLATION.
- MAKE THE INSTALLATION ON THE PRODUCT PACKAGING CARTON OR ON A FLAT FLOOR THAT WILL NOT SCRATCH THE PRODUCT.
- FOR INSTALLATION, 1 STAR WHEEL IS SUFFICIENT. USING ELECTRIC TOOLS IS IMPORTANT.
- FOR YOUR QUESTIONS AND OPINIONS REGARDING INSTALLATION, PLEASE CONTACT OUR AUTHORIZED DEALER.

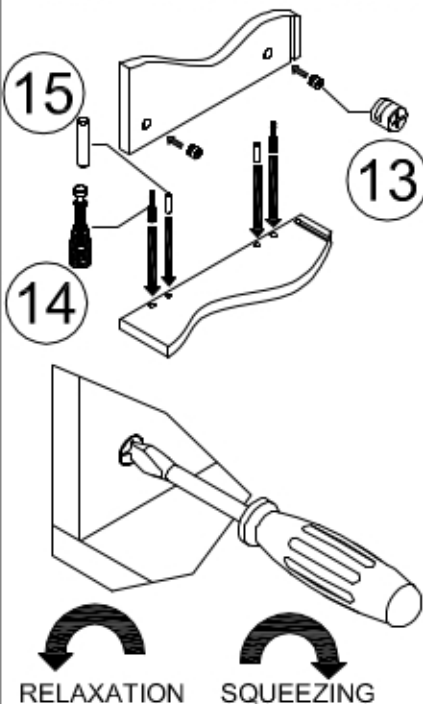


ONE PERSON

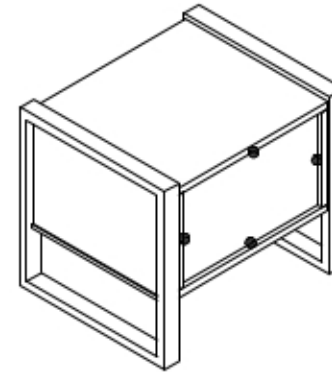
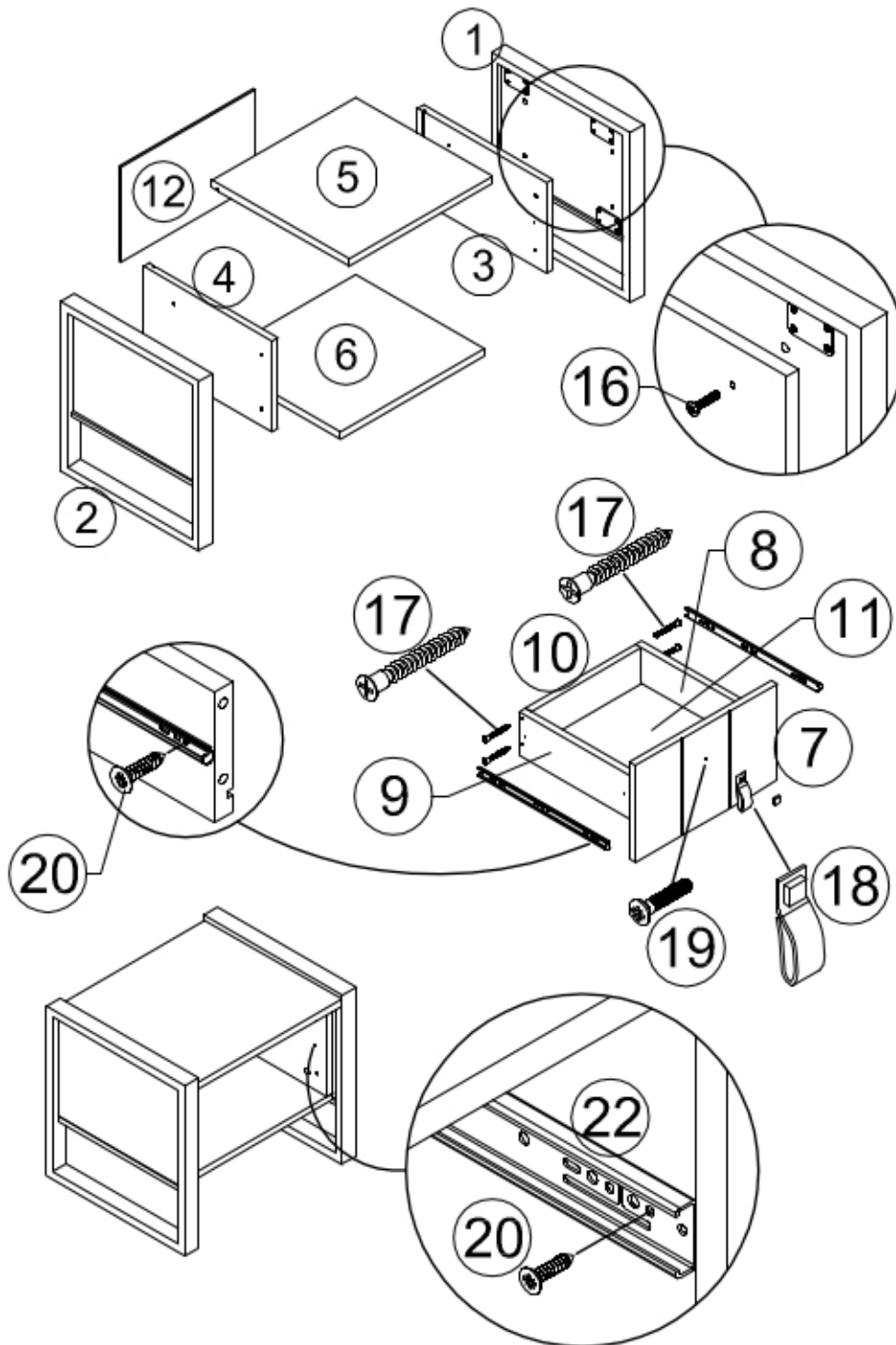


SCREWDRIVER

EXAMPLE OF INSTALLATION WITH MINIFIX



RELAXATION SQUEEZING



ARKALIK SIKIŞTIRICIYI
BÜTÜN KÖŞELERE ÇAKIN
VE VİDALAYIN.

ASSEMBLY MATERIAL BAG CONTENT

P.NO	MATERIALS	QTY	UNIT
13	MINIFIX HEAD	12	PIECE
14	MINIFIX BODY	12	PIECE
15	DOWEL	8	PIECE
16	M6 X 30 YSB SCREW	8	PIECE
17	CABIN SCREW	4	PIECE
18	HANDLE	1	PIECE
19	M4 X 22M HANDLE SCREW	1	PIECE
20	3,5 X 18 CHIPBOARD SCREW	12	PIECE
21	BACKPACK PLASTIC	4	PIECE
22	DRAWER RAIL	2	PIECE

P.NO	TRACK NAME	COLOUR	QTY	THICKNESS	MEASUREMENT	
					X	Y
1	RIGHT IRON FEET	A. ÇAM + METAL	1	40	430	405
2	LEFT IRON FEET	A. ÇAM + METAL	1	40	430	405
3	INNER RIGHT SIDE	ATLANTİK ÇAM	1	18	230	376
4	INNER LEFT SIDE	ATLANTİK ÇAM	1	18	230	376
5	TOP TABLE	ATLANTİK ÇAM	1	18	450	400
6	LOWER TABLE	ATLANTİK ÇAM	1	18	450	381
7	DRAWER FRONT	ATLANTİK ÇAM	1	18	446	245
8	DRAWER RIGHT SIDE	ATLANTİK ÇAM	1	18	350	110
9	DRAWER LEFT SIDE	ATLANTİK ÇAM	1	18	350	110
10	BACK OF DRAWER	ATLANTİK ÇAM	1	18	348	110
11	DRAWER BOTTOM	TEK YÜZ BEYAZ	1	5	362	342
12	BACKREST	TEK YÜZ BEYAZ	1	5	372	240
	ASSEMBLY MATERIAL BAG		1			